



SAE J482 Castle Nut

Leader-Fastener is a manufacturer and distributor of **SAE J482 Castle Nut**. We have a complete line of service from having invested in production plants, export department and to having a quality control team and center to meet your requirements. We regard quality as the life of the company. We persist in good quality as the first policy and have established a set of quality control and inspection system according to the international standard. We have carried out ISO9001 Quality Guarantee System in every course of production, transportation and selling. We do hope we could be your partner in business by topping quality, knight service

and competitive price in the near future and be your friends as well.

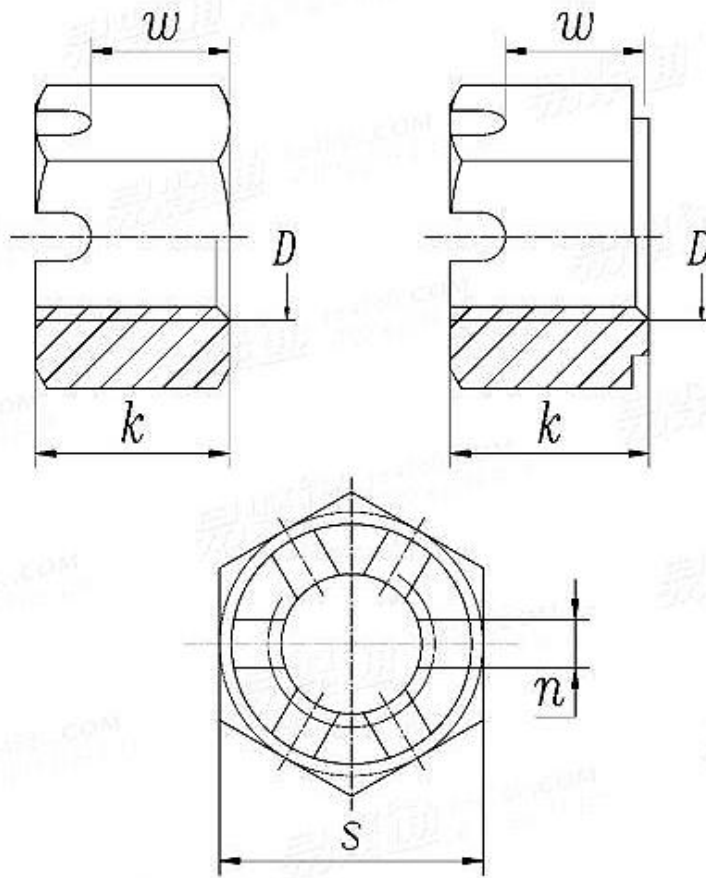
SAE J482 Castle Nut, similar to a slotted nut, with the exception of cutting the slots into a cylindrical part equal in size to the depth of the slot and slightly lower in diameter than the hex width.

Those slots are used with a drilled shank fastener to insert a cotter pin to secure the nut. The slotted and castle styles are now the preferred style that can be interchanged with the slotted model.

Product Specification of **SAE J482 Castle Nut**

Material : Carbon steel, Stainless steel, Alloy Steel, Brass.

Finishment: Black, Zinc Plated, Zinc Yellow, HDG, Phosphate, DACROMET, Geomet, Magin, Ruspert, Teflon, etc.

SAE J 482 (-2) - 2006 US Hex Slotted High Nuts


Thread Size		1/4	5/16	3/8	7/16	1/2	9/16	5/8	3/4	7/8	1	1-1/8	1-1/4
D													
s	max	0.438	0.5	0.562	0.688	0.75	0.875	0.938	1.125	1.312	1.5	1.688	1.875
	min	0.428	0.489	0.551	0.675	0.736	0.861	0.922	1.088	1.269	1.45	1.631	1.812
k	max	0.382	0.461	0.509	0.619	0.667	0.778	0.857	1.015	1.172	1.33	1.52	1.71
	min	0.368	0.445	0.491	0.599	0.645	0.754	0.831	0.985	1.14	1.294	1.48	1.666
n	max	0.1	0.12	0.15	0.15	0.18	0.18	0.24	0.24	0.24	0.3	0.33	0.4
	min	0.07	0.09	0.12	0.12	0.15	0.15	0.18	0.18	0.18	0.24	0.24	0.31
w	max	0.29	0.37	0.38	0.46	0.51	0.59	0.63	0.76	0.92	1.05	1.18	1.34
	min	0.27	0.35	0.36	0.44	0.49	0.57	0.61	0.73	0.89	1.01	1.14	1.29